

A NEW FORESTRY FUTURE

TOITŪ TE WAONU: A MĀORI LED PROJECT FOR REINVIGORATING THE FORESTRY SECTOR BY SECURING LONG TERM WOOD SUPPLY TO DRIVE A FUTURE FOCUSED HIGH VALUE EXPORT INDUSTRY.

Māori land is a large resource that could be used to grow profitable, commercial forests. Large scale wood flows can be utilised to drive value-adding activities that will benefit investors, landowners and regional communities.

An enterprise that embraces community development

Committing the log supply to domestic processing activities will create incentives for local investment and regional economic development.

... with a flexible investment pathway

An investment lifecycle with near and longer term liquidity options, and long term value add and regional development opportunities.

... to align sector resource and capability with global demand.

Global market growth trends support afforestation initiatives, and there is significant opportunity to add-value by leveraging scale.

EMBRACING COMMUNITY DEVELOPMENT

A model for securing long term revenue growth for Māori land owners. Land owners will have the opportunity to grow ownership shares in Toitū Te Waonui.

AGGREGATING SUPPLY TO CREATE LOCAL OPPORTUNITIES

Bringing land together collectively to create scale and enable impact.

Today land ownership is often fragmented, with the challenges of multiple ownership.

There is at least **300,000 Ha** of Māori land where forestry is the logical land use.

A robust aggregation of land feasible for commercial forestry provides scale and control of supply.

LOCAL

Landowner led: plantation forest will be established on large areas of unproductive Māori land. Coupled with the return of existing afforested land, this is a potent economic enabler for whānau, hapū and iwi.

FRAGMENTED

AGGREGATED

TOITŪ TE WAONU

MANAGEMENT

A business vehicle for a cooperative of land owners to supply land and forest into a large scale national forestry portfolio business.

A platform for mobilising under-utilised Māori land as cornerstone contribution to a large NZ forestry plantation and management enterprise.

LAND OWNERS

INVESTORS

Ability to bring together: long term indigenous land investors, community focused entrepreneurs, off-shore commodity investors and science driven commercial opportunities around wood as a catalyst.

Maximising the advantages of increasing scale.

A robust aggregation of land feasible for commercial forestry provides scale and control of supply.

GLOBAL

Forecast for sustainable near-term wood products to experience an unprecedented period of growth. **Long term:** a strongly supportive global environment for afforestation in New Zealand.

A COORDINATED APPROACH to invest long term in both a commodity fund as well as develop higher margin downstream activities.

INCREASED LOCAL PROCESSING

Primary investors opportunity for investors that are not able to commit to a 25-30 year plan to exit earlier.

SHORT TERM EXIT STRATEGY

A transparent and flexible enterprise financial structure.
A STRUCTURED INVESTMENT AND VALUE PATHWAY.

GENERATING REVENUE

SUPPLYING ENGINEERED WOOD PRODUCTS
wood derivative technologies and design driven construction and engineering solutions + other technologies (including biofuels)

SUSTAINING AN INDUSTRY
Extending ownership across the value chain.

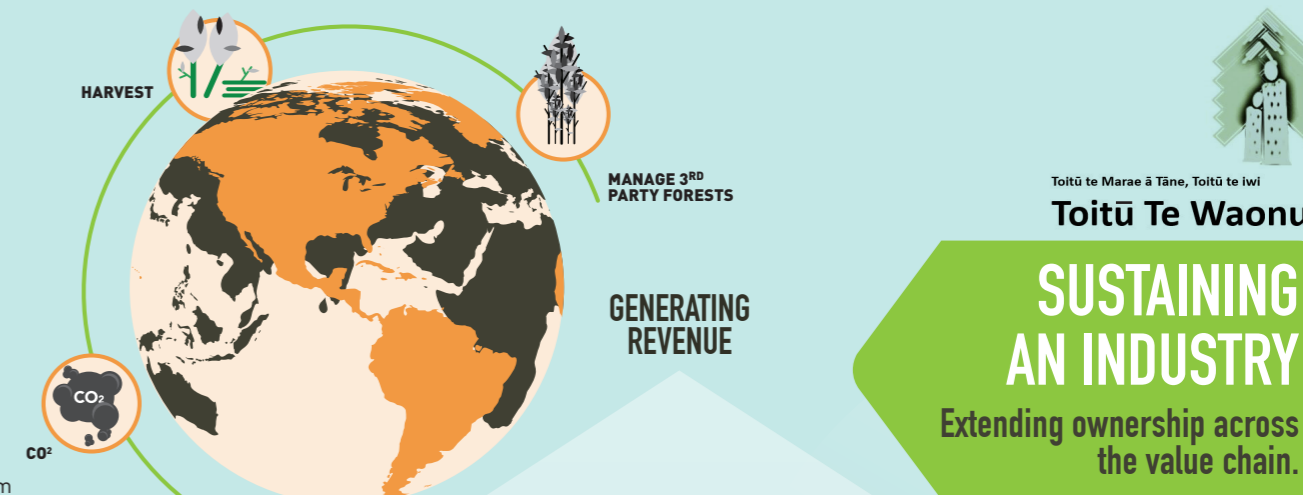
A long term vision to rebuild an industry with sufficient industry certainty to finance and support a thriving value add sector for wood derived products.

SCALE AND SECURITY OF SUPPLY

Secondary investors will be sourced to take over upon exit of initial investors at the 10-15 year point.

LONG TERM EXIT STRATEGY

This provides an opportunity for landowners to grow an equity share: increase their stake over time.



A billion dollar forest asset generating \$100m of income annually.

