



Head Office:
P O Box 1209
99 Sala Street
Rotorua
New Zealand
Ph: +64 7 345 7573

Email: admin@interpine.co.nz
Website: www.interpine.co.nz

Land Use and Carbon Analysis System (LUCAS) Post 1989 Planted Forest Soil Measurement 2014

Information Release for Survey Site Landowners

Interpine is working with the **Ministry for the Environment (MFE)** to undertake soil sampling and analysis for carbon monitoring within the existing planted Post-89 forests plot network. This is the same plot network Interpine has carried out forest inventory on between 2007 and 2012.

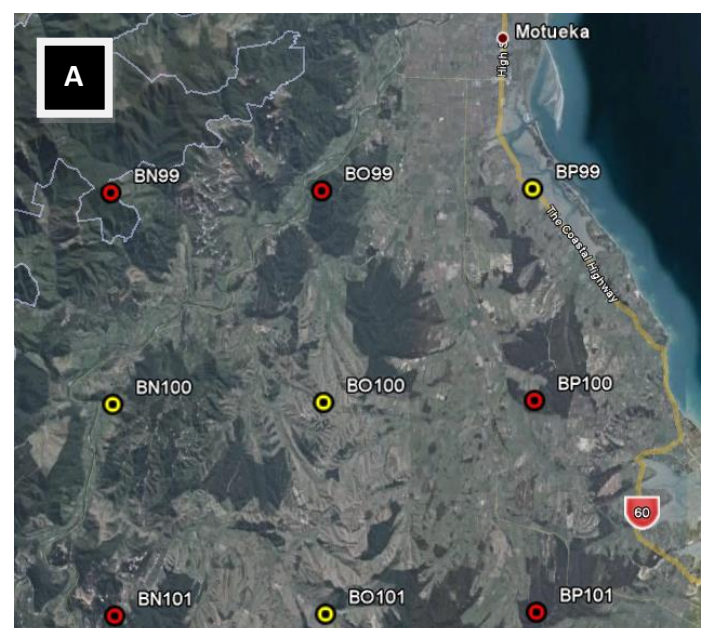
So what is LUCAS ?

The New Zealand Land Use and Carbon Analysis System (known as the LUCAS project) is a programme of work to measure and monitor the national level carbon stocks of New Zealand's forests and soils. Carbon stock information is required for New Zealand's reporting requirements under the Kyoto Protocol and the United Nations Framework Convention on Climate Change. LUCAS is an important part of the Government's climate change policy package and will help inform our future international climate change negotiations.

For more information on LUCAS see <http://www.mfe.govt.nz/issues/climate/lucas/index.html>

Why is LUCAS interested in the soil beneath the trees on my land ?

The NZ Planted Forest Soil Carbon Monitoring System uses a selection of plots within the existing national grid-based network (A) of permanent plots to provide an unbiased estimate of carbon stored in the soil. The LUCAS soil carbon model assumes soils under planted forests reach a steady state 20 years following conversion from pasture to forest so the soil survey is focused on those plots under first rotation that are at least 20 years of age. From the existing planted Post-89 forest sites across the country there is 93 which meet this criteria. The LUCAS project has already completed a similar soil data collection and analysis of our natural forests.



INTERPINE PROVIDING EXPERTISE IN:

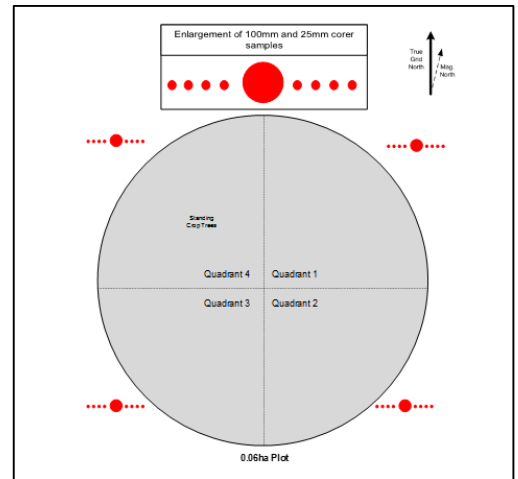
* Resource and Carbon Inventory & Appraisals * Log Scaling and Quality Control * Harvesting Performance Appraisals * Stand Optimisation & Log Value Recovery * Data & Information Management * Resource to Mill Supply Chain Initiatives *

Who is involved with this LUCAS Project?

Interpine has been contracted by **MfE** to complete the field survey of 30 (of 93) sites around the country. On site it is our staff who you will be dealing with. Sarah from our team will contact you to let you know when to expect our field team on site. Prior to this you, or a representative of the owner will have been contacted by **MfE** (Nancy Golubiewski) by phone, letter, or e-mail regarding permission for access onto your forest land. After we survey your site you may also be contacted by **an external auditor**, who will be conducting an audit of our field work on a small percentage of the sites.

What happens on a LUCAS soil survey site?

In total 24 samples (6x4) will be collected from the site, based on 4 soil sample points which will be located as shown in **(B)**. These are will be located 1m outside the slope adjusted boundary of the planted forest plot, and be based on a random bearing per quadrant. Samples will be taken in 10cm profiles down to a depth of 30cm using 25mm and 100mm cores **(C)**, **(D)** and **(E)**.



What information can landowners provide to assist in the LUCAS project?

There are a number of ways you can assist with the project. We would greatly appreciate information like:

- Confirmation of land owner contact details, and any other parties which should be contacted now and in the future about access to the site (farm or forest managers). Also note your preferred method of contact: phone, fax, email, or letter.
- The easiest way to get access to the site location (we can provide maps, shape files on request for sites within your forest).
- Do we need any gate keys / permits or special equipment (RT radio's, Quad bikes) to access the site ?
- Let us know of any concerns you have with access e.g. lambing, inaccessible after heavy rain
- Have you conducted any silviculture on the trees (pruning, thinning, fertilising, spraying) which may affect access or have you harvested your trees?

Will we be back? If so how often ?

Yes most likely, an MfE contracted company will be back to re-measure these sites for soil and/or forest inventory in the future. As noted earlier these sites are established as a permanent network around the country. It is intended a sample of the sites will be re-measured every 4-5 years, although this has yet to be confirmed.

What if you plan to cut the trees down, or thin or prune trees at the sample site?

You are free to do as you please with the site. LUCAS aims to gather growth and carbon stock information from the site over time and you should treat the site how you would the rest of your forest or planted area. It is normal forestry practice to do all of the above so we expect this will occur.

Where will the information be used? Who has access to it ?

On your request this information will not be shared outside of the LUCAS project and used only for its primary objective of monitoring carbon stock change in New Zealand's planted forests therefore advancing New Zealand's reporting commitments under the United Nations Framework Convention on Climate Change (UNFCCC), and the Kyoto Protocol. If however you are ok with the data being shared with other projects you can let us know and we can tag your dataset if indeed other parties would like to use it.

Can you get a copy of data collected onsite?

Yes of course, you are welcome to the dataset collected by our teams. This will include all maps, photos, lab results and data collected onsite. Please let our teams know you would like the dataset and we can send this to you at the end of the measurement season.

Can I claim the soil carbon measured from beneath my forest through the ETS?

In short no. We have had many landowners interested in understanding the potential of "carbon credits" and trading schemes related to the introduction of legislation called ETS (emissions trading scheme). The LUCAS project is not associated with the ETS and has been running for several years (Natural forest surveys started in 2002). The NZ ETS currently does not include soil carbon.

The screenshot displays the 'NEW ZEALAND CARBON MONITORING SYSTEM' interface. At the top, it shows 'SURVEY DATAFILES AND PHOTOS' for 'CMS PLOT IDENTIFIER: CJS9E1' and 'DATE: 25-Sep-07'. Below this, there is a 'Site Data Files' section with a table listing various files such as 'CJS9E1_FF070925_GPS-Correct_XXXX.txt', 'CJS9E1_FF070925_GPS-XXXX.COR', and 'CJS9E1_FF070925_Photos0959.jpg'. A 'Survey Photos (Thumbnails)' section shows three small photo thumbnails with their respective file names and references. At the bottom right, there is a 'Tree Layout Map' for 'Plot 3' showing a grid with several green dots representing tree locations.

So what is this ETS legislation about then ?

“The Government has introduced legislation into Parliament which establishes an economy-wide Emissions Trading Scheme (ETS) covering all greenhouse gases in New Zealand. The ETS is designed to allow New Zealand to meet its international climate change commitments (for example, under the United Nations Framework Convention on Climate Change and its Kyoto Protocol) at least cost in the long term. It will require specific people and companies to surrender emission units (NZUs) or other Kyoto Protocol emission units to match the level of emissions for which they are responsible.

Where can I get more information ?

The LUCAS Project: <http://www.mfe.govt.nz/issues/climate/lucas/index.html>

UNFCCC and Kyoto Protocol: <http://www.mfe.govt.nz/issues/climate/lucas/international-agreements.html>

MPI's Emission Trading Scheme for Forestry (ETS): <http://www.mpi.govt.nz/forestry/forestry-in-the-ets>

Summary

I hope you have found this information useful and please feel free to contact us if you have any further questions.

Kind Regards

David Herries

General Manager, Interpine Forestry Ltd, Phone: 021 435623

FURTHER CONTACTS

INTERPINE FORESTRY LTD

Project Manager: David Herries

Logistics Contact: Sarah Pitcher-Campbell

(Field survey teams)

Phone: 021 435623

Phone: 0274 468946

www.interpine.co.nz

Email: david.herries@interpine.co.nz

Email: sarah@interpine.co.nz

Ministry for the Environment

Project Manager: Nancy Golubiewski

(Project owner)

Phone: 04 439 7576

www.mfe.govt.nz

Email: Nancy.Golubiewski@mfe.govt.nz



Disclaimer:

This information release has been put together by Interpine Forestry Ltd to assist landowners or interested parties help understand why we are coming onto their land to measure their trees. This is not intended as an official information release from MFE and if landowners would like more information please review the websites listed above, and related contact details.