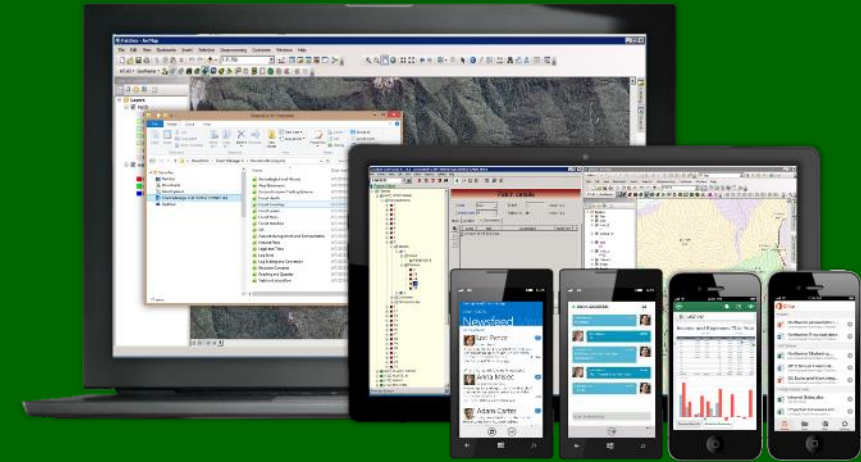


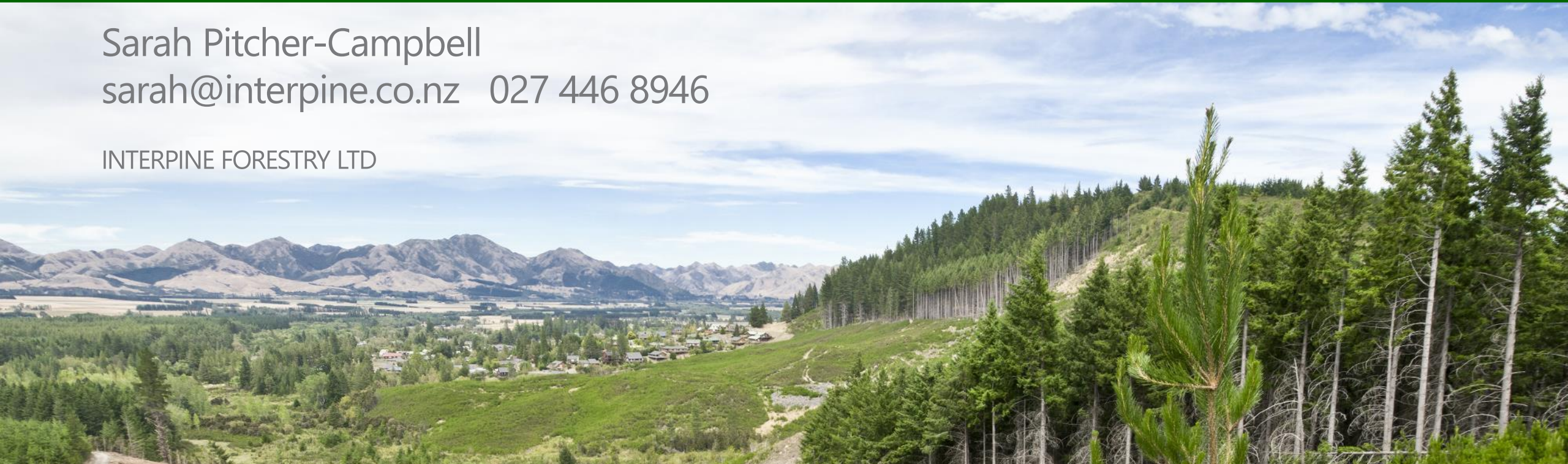
Discover the Cloud for Forest Management



Bringing the benefits of cloud computing to the forest industry

Sarah Pitcher-Campbell
sarah@interpine.co.nz 027 446 8946

INTERPINE FORESTRY LTD



Empower Your Business

Centralise Business
Information &
Access from
Anywhere at
Anytime

PSLOG

Log Sales
Management



Security

Protect and
Backup your Data



Transparent Pricing

Simple Transparent
and Scalable
Monthly Pricing
from
cents/ha/month

Office 365

The Power and
Reliability of
Microsoft Business
Cloud Services
with Office 2013



CHPS

Analyse Terrain
where Cable
Haulers are Used



GeoMaster

Protect Your Data
and Information
Management with



ESRI ArcGIS

Manage your
Spatial Data with
the World's
Leading GIS
System



forest owners and managers face many challenges



"Not having access to industry standard tools hurts my business as it makes me look less professional."



"I can't afford expensive upfront software contracts, and IT hardware"

"Information is our business, I need an easy way to share and work on this from anywhere."



"Our focus is on the forest operations, but regulations now require detailed forest management records for at least 20 years"

ATLAS GeoMaster V1.18.0 Connected to: IPF-RDS01\SQLEXPRESS

File Events Area Edit View Select Reports Utilities Help

10.01.2013

Forest View

Forests	Forest Id	Name
(652) NORTHBANK	652	NORTHBANK
(653) QUAYLE CREEK	653	QUAYLE CREEK
(720) HUNTS_JV	720	HUNTS_JV
(721) KAINUI	721	KAINUI
(722) MOUTERE	722	MOUTERE
(723) RAINY RIVER	723	RAINY RIVER
(724) SERPENTINE	724	SERPENTINE
(725) KORERE	725	KORERE
(726) BRIGHTWATER	726	BRIGHTWATER
(727) TE HEPE	727	TE HEPE
(751) GOLDEN DOWNS	751	GOLDEN DOWNS
(752) RAI	752	RAI
(821) PORT UNDERWOOD	821	PORT UNDERWOOD
(822) LINKWATERKOROM	822	LINKWATERKOROM
(823) WAKAMARINA	823	WAKAMARINA
(824) OPOURI	824	OPOURI

forest owners and managers face many challenges

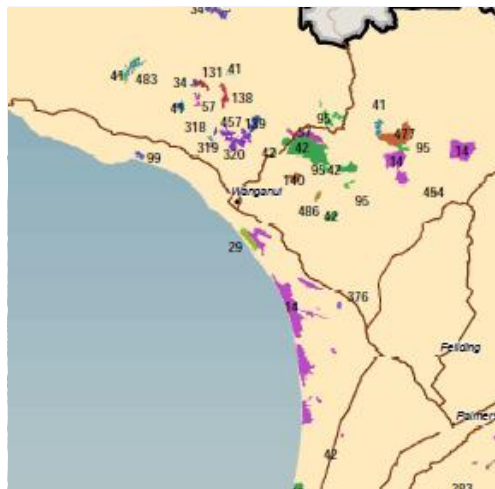


"we don't have the scale to employ specific specialist skills in GIS, yield analysis and modelling"



"Installing hardware IT systems is too complex for the scale of our forestry business"

"we own forests in 3 regions, have 3 different forest managers, how can we centralize forest information, and in one common format"



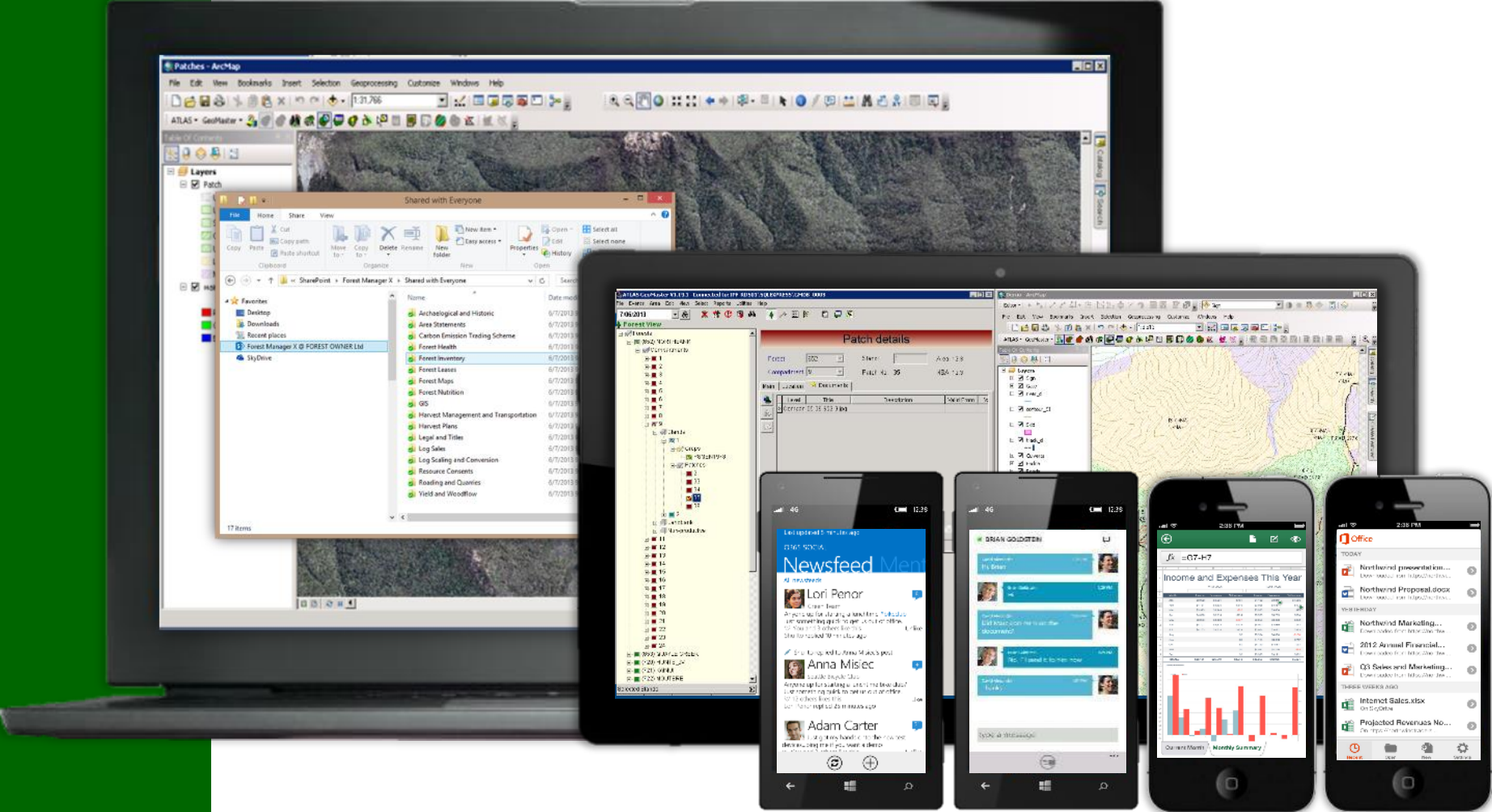
"It is a constant challenge to avoid duplication and ensure we are all working to the same plan"





Anywhere Access

Access your data and software on a range of devices from anywhere



Make your documents available in the cloud and keep a sync'd offline copy on your PC

Office 365 Outlook Calendar People Newsfeed SkyDrive Sites ... Forest Manager X

BROWSE FILES LIBRARY

SkyDrive @ Interpine Forestry Limited

Documents

+ new document or drag files here

All Find a file

Name	Modified	Forest Manager X
Archaeological and Historic	26 min	
Area Statements	24 min	
Crown Forest Leases	26 min	
Forest and Operations Maps	25 min	
Forest Health	26 min	
Forest Nutrition	26 min	
GIS	26 min	
Harvest Management and Transportation	21 min	
Harvest Plans	22 min	
Inventory	25 minutes ago	Forest Manager X
Legal	25 minutes ago	Forest Manager X
Log Sales	23 minutes ago	Forest Manager X
Resource Consents	24 minutes ago	Forest Manager X
Roading and Quarries	23 minutes ago	Forest Manager X
Scaling and Conversion Factors	23 minutes ago	Forest Manager X
Shared with Everyone	2 hours ago	Forest Manager X
Yield and Woodflow	24 minutes ago	Forest Manager X

Shared with Everyone

File Home Share View

Copy Paste Copy path Move to Copy to Delete Rename New folder Easy access Properties Edit History Select all Select none Invert selection Select

Clipboard Organize New Open Select

SharePoint Forest Manager X Shared with Everyone Search Shared with Everyone

Name	Date modified	Type
Archaeological and Historic	6/7/2013 9:06 AM	File folder
Area Statements	6/7/2013 9:06 AM	File folder
Carbon Emission Trading Scheme	6/7/2013 9:06 AM	File folder
Forest Health	6/7/2013 9:06 AM	File folder
Forest Inventory	6/7/2013 9:06 AM	File folder
Forest Leases	6/7/2013 9:06 AM	File folder
Forest Maps	6/7/2013 9:06 AM	File folder
Forest Nutrition	6/7/2013 9:06 AM	File folder
GIS	6/7/2013 9:06 AM	File folder
Harvest Management and Transportation	6/7/2013 9:06 AM	File folder
Harvest Plans	6/7/2013 9:06 AM	File folder
Legal and Titles	6/7/2013 9:06 AM	File folder
Log Sales	6/7/2013 9:06 AM	File folder
Log Scaling and Conversion	6/7/2013 9:06 AM	File folder
Resource Consents	6/7/2013 9:06 AM	File folder
Roading and Quarries	6/7/2013 9:06 AM	File folder
Yield and Woodflow	6/7/2013 9:09 AM	File folder

17 items





Industry standard forest
information storage

Access to proven industry standard software tools without the need for large upfront costs

ATLAS GeoMaster V1.18.0 Connected to: IPF-RDS01\SQLEXPRESS\G MDB_Atlas

File Events Area Edit View Select Reports Utilities Help


10/01/2013

Forest View

Forest Id	Name	Area	Planned	Actual	Region	Group	Owner Contact	Postal Address/1	Postal Address/2	Delivery Address/1	Delivery Address/2	City	Telephone	Fax	Email
652	NORTHBANK	0.0	N		WNZI										
653	QUAYLE CREEK	0.0	N		SOLD										
720	HUNTS_JV	0.0	N		WNZI										
721	KAINUI	0.0	N		WNZI										
722	MOUTERE	0.0	N		WNZI										
723	RAINY RIVER	0.0	N		WNZI										
724	SERPENTINE	0.0	N		WNZI										
725	KORERE	0.0	N		WNZI										
726	BRIGHTWATER	0.0	N		WNZI										
727	TE HEPE	0.0	N		WNZI										
751	GOLDEN DOWNS	0.0	N		WNZI										
752	RAI	0.0	N		WNZI										
821	PORT UNDERWOOD	0.0	N		SOLD										
822	LINKWATER/KOROM	0.0	N		WNZI										
823	WAKAMARINA	0.0	N		WNZI										
824	OPOURI	0.0	N		WNZI										
826	WAIRAU SOUTH	0.0	N		WNZI										
827	AWATERE	0.0	N		WNZI										
851	WAIRAU NORTH	0.0	N		WNZI										
881	ARAPAWA	0.0	N		SOLD										
922	PROFFIT_JV														
951	FARNELL JV														
953	CRUMP JV														
987	HOLDAWAY_JV														

Selected Stands

Forest	Cpt	Stands
		None



Patches - ArcMap


File Edit View Bookmarks Insert Selection Geoprocessing Customize Windows Help

1:31,766

ATLAS - GeoMaster

Layers

- Patch
 - Unknown
 - Unplanted
 - Stands
 - Cutover
 - Unstocked
 - Landbank
 - Non-Prod
- waiau_NTSM.tif
 - RGB
 - Red: Band_1
 - Green: Band_2
 - Blue: Band_3



Select modules
to suit your
needs and
budget...





A total forestry cloud solution
for small to medium
businesses

As a Microsoft cloud services partner Interpine have combined our cloud services with the Business Strength of Microsoft Office 365

deploy with those that know your industry



Look Professional



Best Value

Anywhere Access



No IT Required



Office 365

Your complete office in the cloud.

Simplify your IT

Set up quickly with easy-to-use services

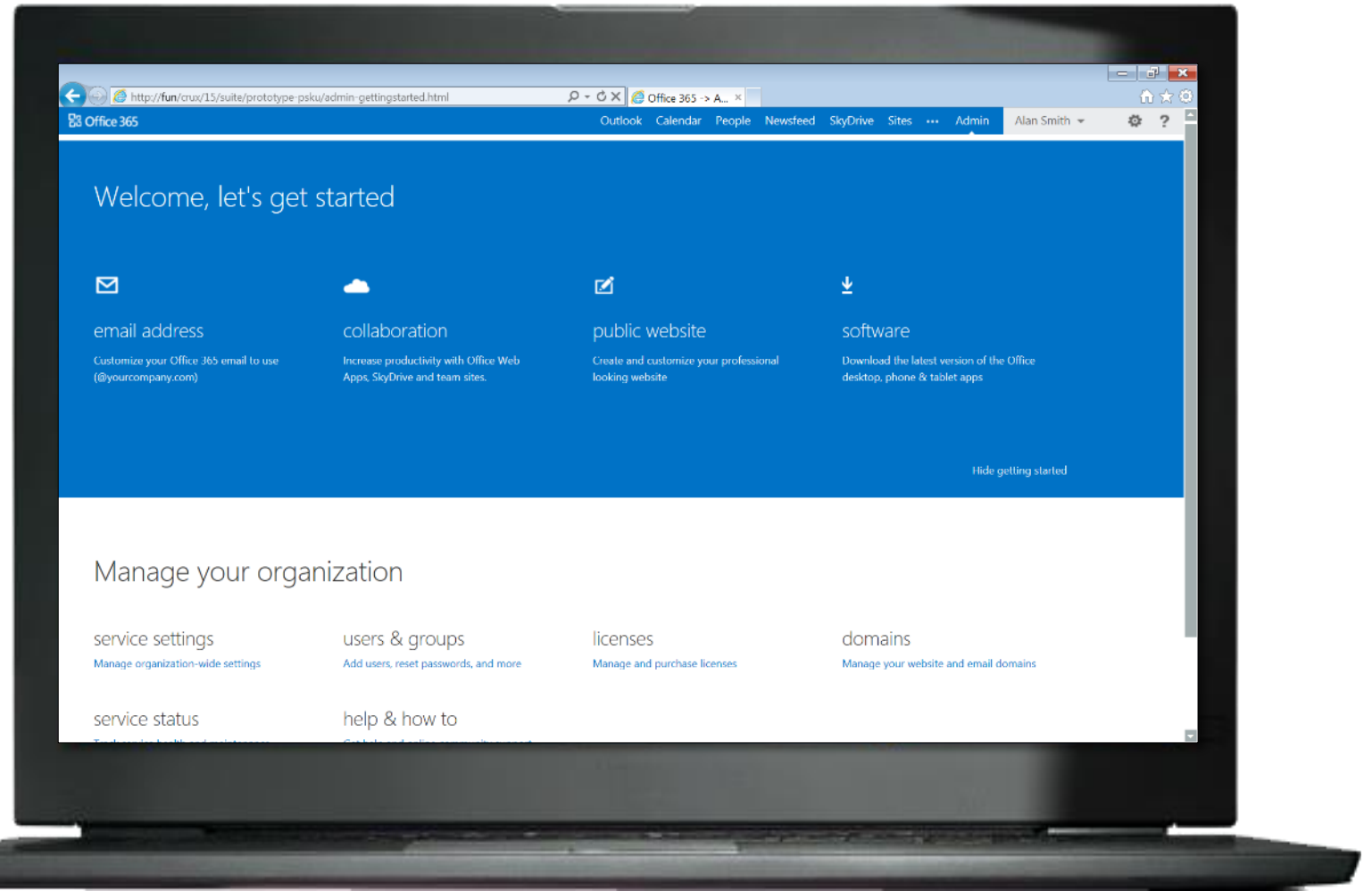
Manage users and settings from a simplified yet powerful web portal

Built-in malware protection

Continuous data backup to geo-redundant servers

99.9% financially-backed service level agreement

Email, Office, File Sharing, Online Meetings



Office 365

Your complete office in the cloud.



Ask for a demo
at the
conference
or book an
online demo

ATLAS GeoMaster V1.19.1 Connected to: IPF-RDS01\SQLEXPRESS\G MDB_0003

7/06/2013

Forest View

Forests

- (652) NORTHBANK
 - Compartment 1
 - 2
 - 3
 - 4
 - 5
 - 6
 - 7
 - 8
 - 9
 - 2
 - 11
 - 12
 - 13
 - 14
 - 15
 - 16
 - 17
 - 18
 - 19
 - 20
 - 21
 - 22
 - 23
 - 24
 - (653) QUAYLE CREEK
 - (720) HUNTS_IV
 - (721) KAINUI
 - (722) MOUTERE

Selected Stands

Forest	Cpt	Stands
(652) N...	9	1

Patch details

Forest: 652 Stand: 1 Area: 12.3

Compartment: 9 Patch No: 35 NSA: 12.3

Main Location Documents

Level	Title	Description	Valid From	V
>	Compart	05-06-652-9.jpg		

Patch Note

Table of Contents

- Layers
 - Sign
 - Gate
 - river_d
 - contour_ST
 - Slid
 - track_d
 - Culverts
 - Bridge
 - Roads
 - Cutover
 - Settings
 - Patch
 - Unknown
 - Unplanted
 - Stands
 - Cutover
 - Unstocked
 - Landbank
 - Non-Prod
 - Block
 - wairau_NZTM.tif
 - Bing Maps - Aerial

1635024.191 5400948.92 Meters

Next steps

Bring the benefits of cloud computing to your forestry business

Discover
**Forest
Management**
Cloud Services

Talk to the Interpine team to understand your needs

Ask for a demo or trial

Begin your implementation plan

Sarah Pitcher-Campbell
sarah@interpine.co.nz 027 446 8946

INTERPINE FORESTRY LTD

